

Detection and Rejection of Wrong regimen, Wrong orientation and Empty blister in wallet

Customer

Recognized as a leading manufacturer of complex oral and injectable cephalosporins.

Customer Requirements

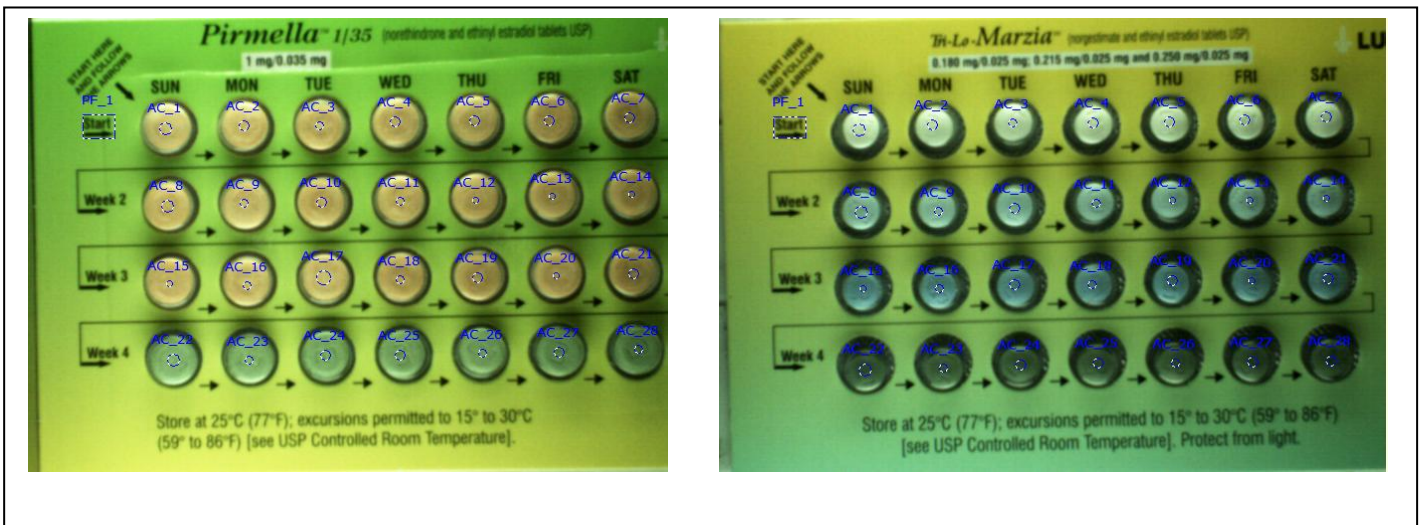
They required a vision system which is capable of detecting wrong regimen of tablets, Wrong orientation of tablets and absence of tablet and also system should eject faulty product from the production line and also batch report should be generated with date and time stamp.

Why EPSILON

The customer has similar vision system but it had multiple fail rejection and has programming complications due to similar colour of tablets and wallet. Hence customer needs better and reliable system that can be taken online and able to replace the old system. Hence, EPSILON.

Challenges

- The tablets have similar shades of colour
- Tablets and wallet colours may be similar for some products
- Size of tablets is not similar for all products
- Shiny cavity of tablet gives reflections



EPSILON Solution

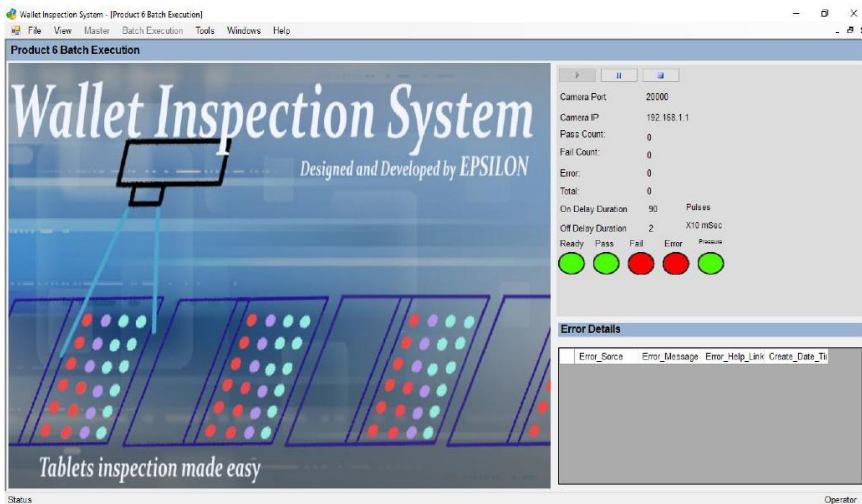
Epsilon has provided banner camera with lens, SS canopy, bar lights, control panel for audio visual indication and Epsilon's "Wallet Inspection Software" for accessing and programming of camera from IPC, also software is able to generate batch report at the end of the batch with date and time stamp.

Designing for customer

We have designed a stainless steel canopy which can hold camera and 2 bar lights in such a way that we will able to get good contrast of colours without any reflections. Stainless steel canopy also helps to protect tablets from external lights while inspection. Epsilon's Wallet inspection software has provided multiple facilities as follows

- Helps to program for new product
- Stores created program so that no need to reprogram for similar product
- Low Air Pressure interlock

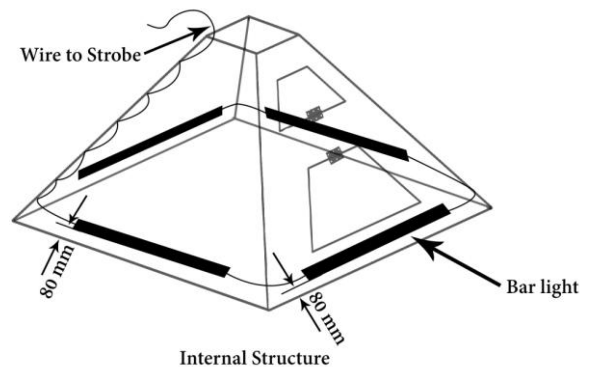
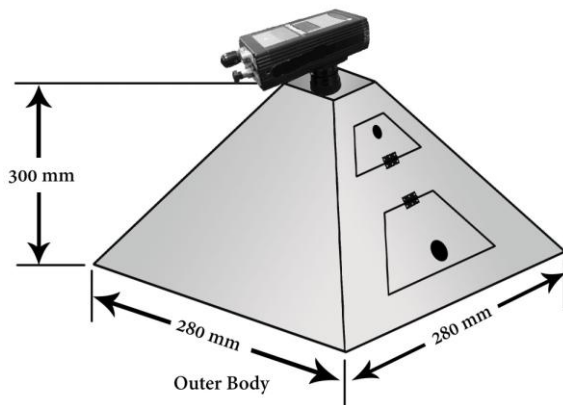
- Shows live images from camera
- Pass/Fail counts indication
- On delay and Off delay can be changed with the help of software
- Software is able to generate batch details with date and time stamp and also generated report has details of who has started or stopped batch of which product
- Software has two level password protection
- Password protection facility to start or stop the batch so that any one will not able to start or stop the batch.
- No one can close software while batch is executing



EPSILON's "Wallet Inspection System" Software



Control panel with audio visual Indication



Stainless Steel Canopy

Customer Benefits

- Faulty product is avoided to go in market
- Batch report of every executed batch with start and stop details including date & time stamp
- No matter what colour of the wallet, inspection is always reliable
- System is universal for 28 tablet pack size, no effect of size of tablets

Learn more

Visit www.epsilonfiberoptics.com for more application information